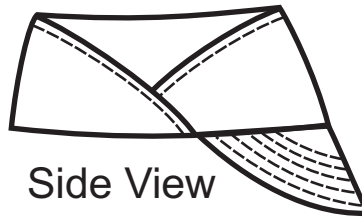


# To print this pattern and instructions, you will need seven sheets of legal sized paper (8 1/2" X 14")

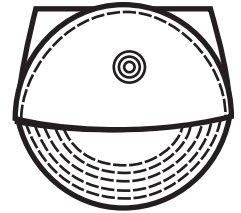
## Notes:

A 5/8" seam allowance has been added to all pieces. For best results, trim facing seam allowances and press all seams open or flat (depending on the type of seam.) Precutting your pattern pieces will help prevent confusion later. Take your time with this pattern! There are a lot of pieces but if you take your time, you will likely have better results.

This pattern has been slightly modified from the original created by Kathy van Beuningen and seam allowances have been added.



Side View

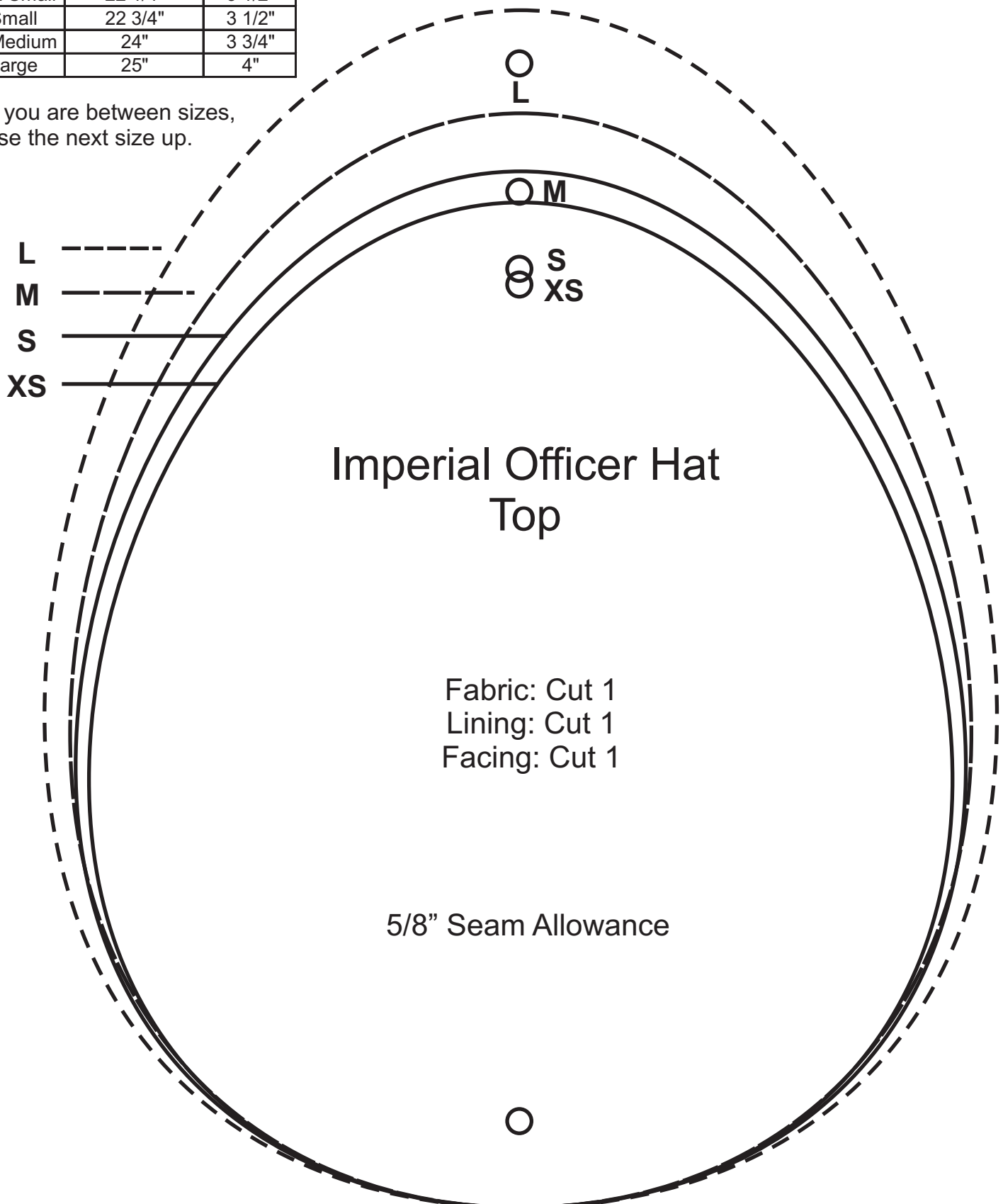


Front View

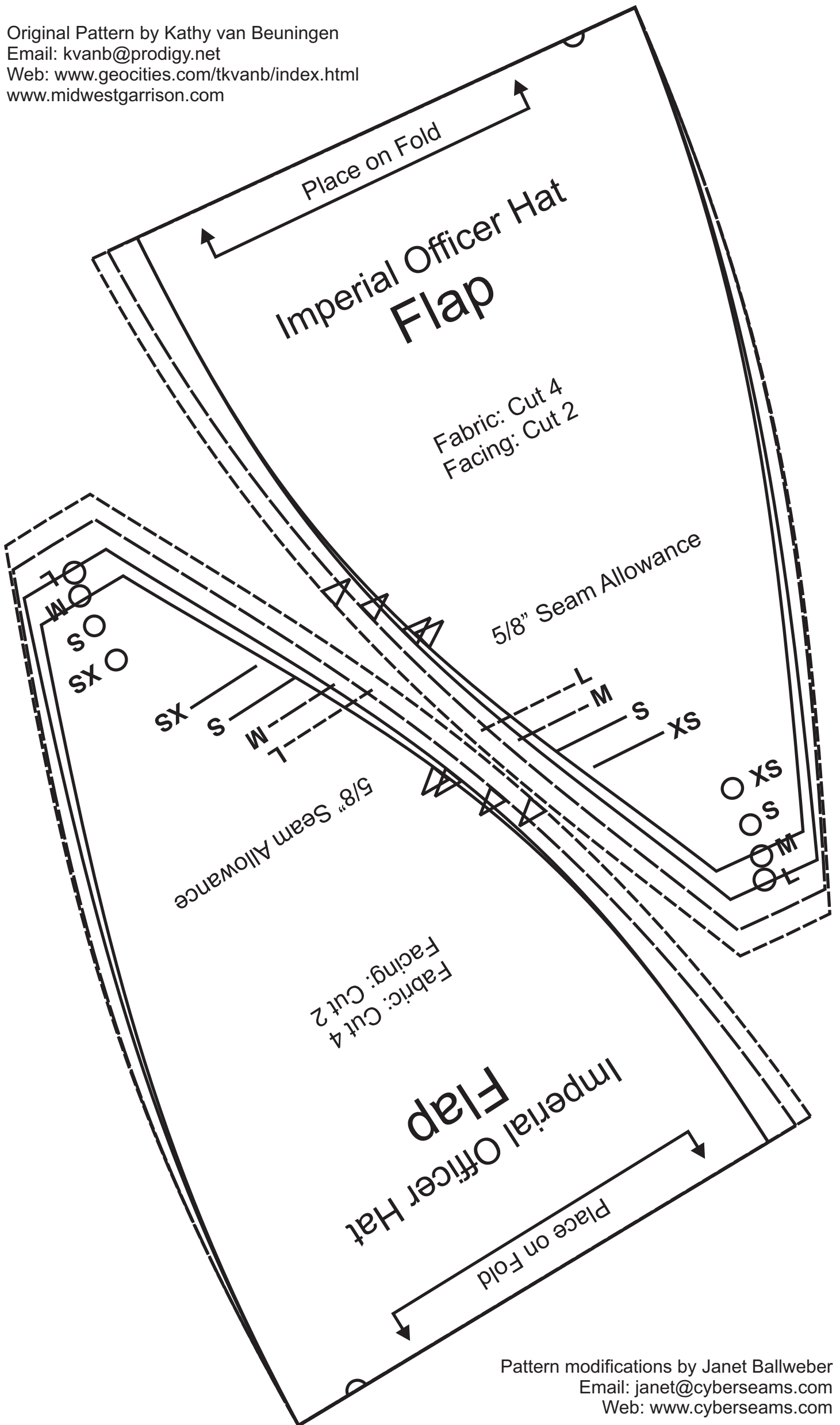
## Size Guide (finished measurements):

Size	Inner Circumference	Height
X-Small	22 1/4"	3 1/2"
Small	22 3/4"	3 1/2"
Medium	24"	3 3/4"
Large	25"	4"

If you are between sizes, use the next size up.

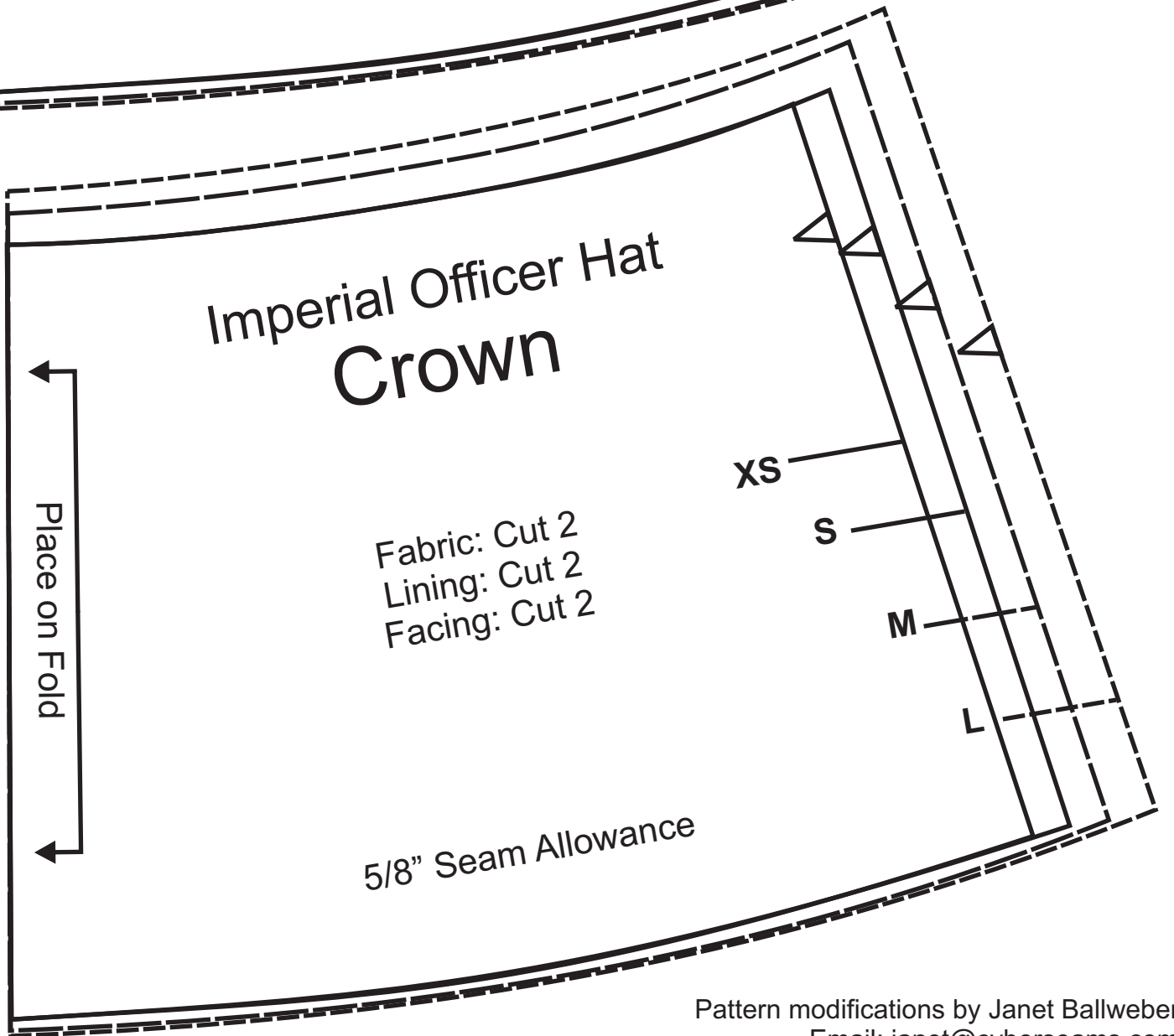
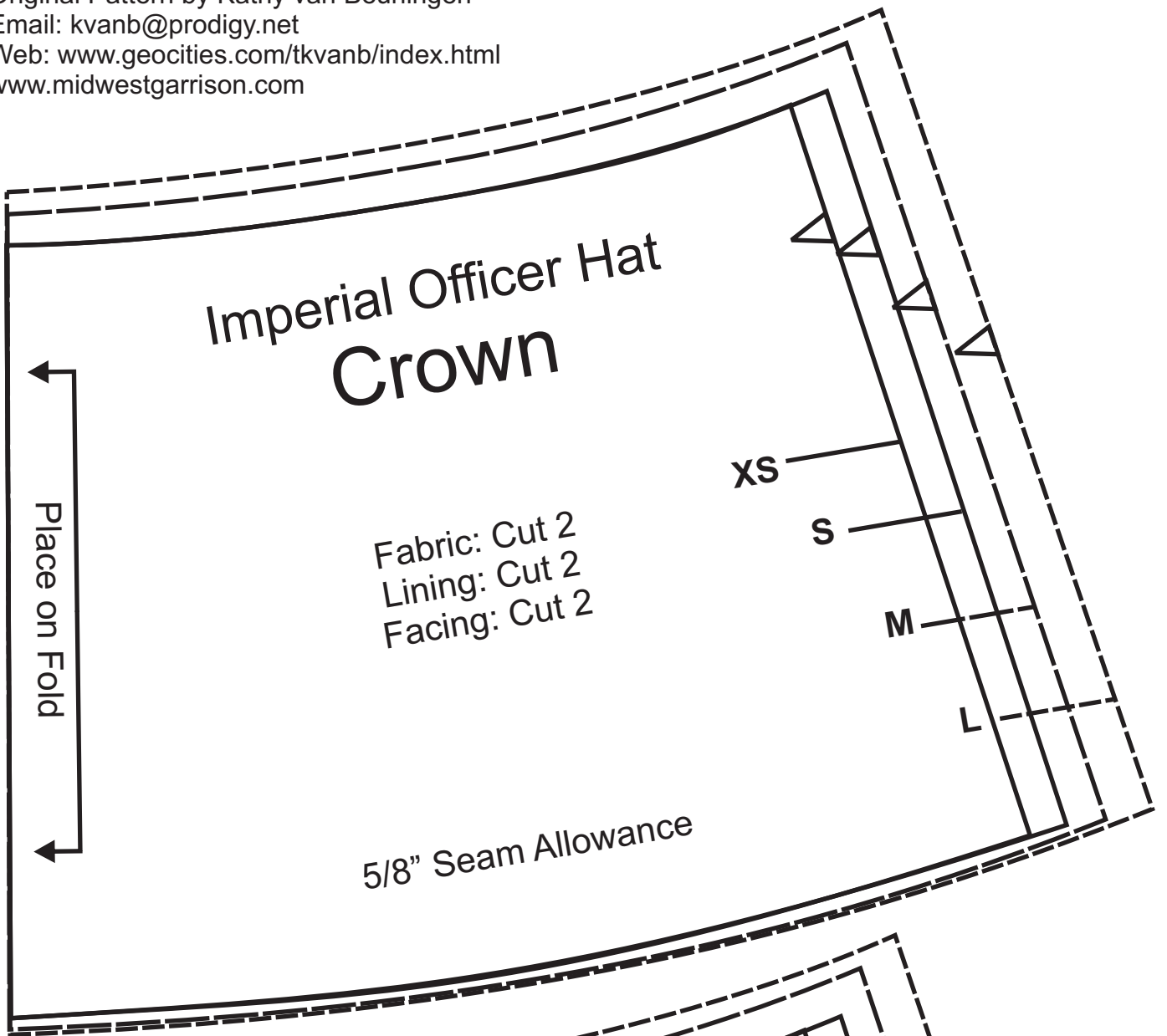


Original Pattern by Kathy van Beuningen  
Email: [kvanb@prodigy.net](mailto:kvanb@prodigy.net)  
Web: [www.geocities.com/tkvanb/index.html](http://www.geocities.com/tkvanb/index.html)  
[www.midwestgarrison.com](http://www.midwestgarrison.com)

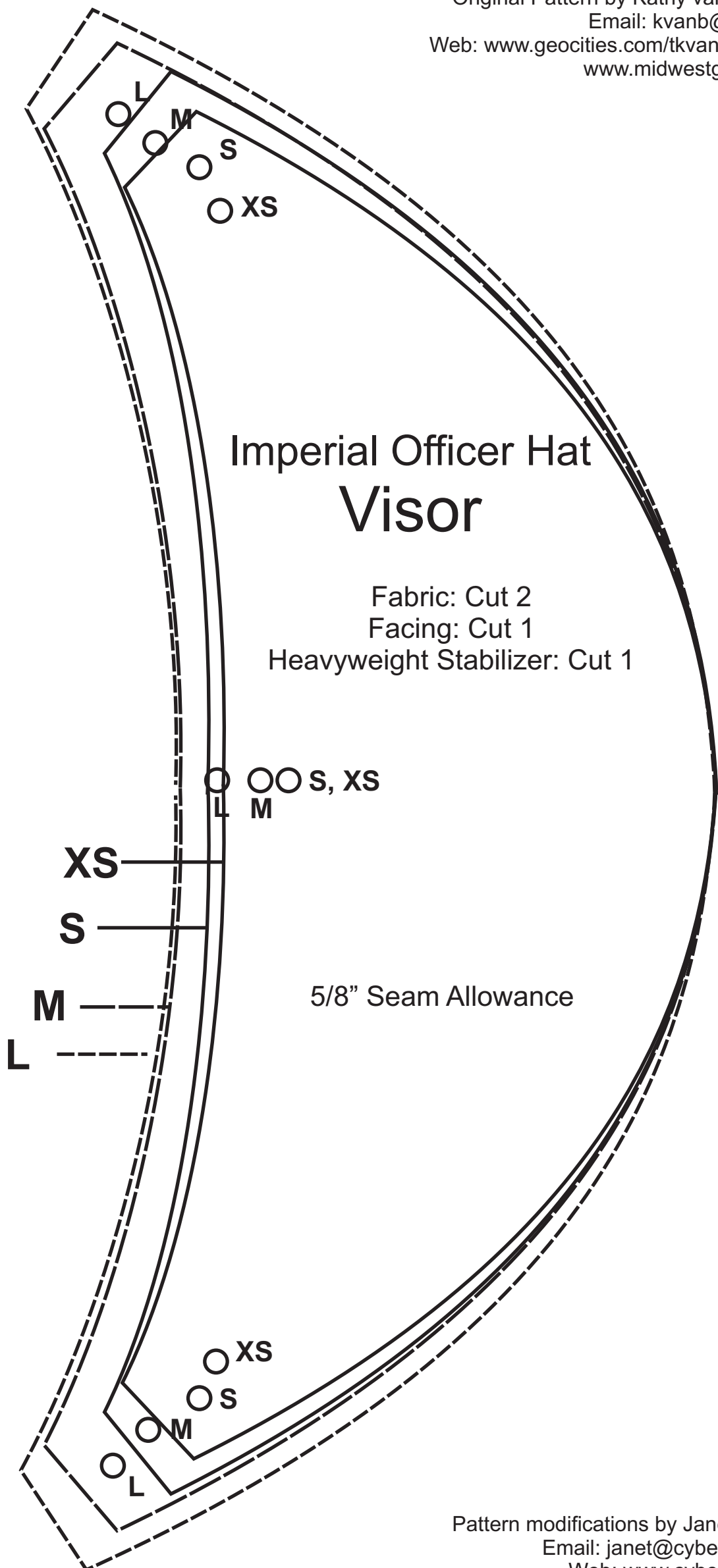


Pattern modifications by Janet Ballweber  
Email: [janet@cyberseams.com](mailto:janet@cyberseams.com)  
Web: [www.cyberseams.com](http://www.cyberseams.com)

Original Pattern by Kathy van Beuningen  
Email: [kvanb@prodigy.net](mailto:kvanb@prodigy.net)  
Web: [www.geocities.com/tkvanb/index.html](http://www.geocities.com/tkvanb/index.html)  
[www.midwestgarrison.com](http://www.midwestgarrison.com)



Pattern modifications by Janet Ballweber  
Email: [janet@cyberseams.com](mailto:janet@cyberseams.com)  
Web: [www.cyberseams.com](http://www.cyberseams.com)



# Directions

To make Imperial Officer Hat:

You will have the following amounts of pieces cut out:

## Piece Checklist:

### Fabric:

- \_\_\_ 4 Flap
- \_\_\_ 2 Crown
- \_\_\_ 2 Visor
- \_\_\_ 1 Top

### Linig Fabric:

- \_\_\_ 2 Crown
- \_\_\_ 1 Top

### Interfacing:

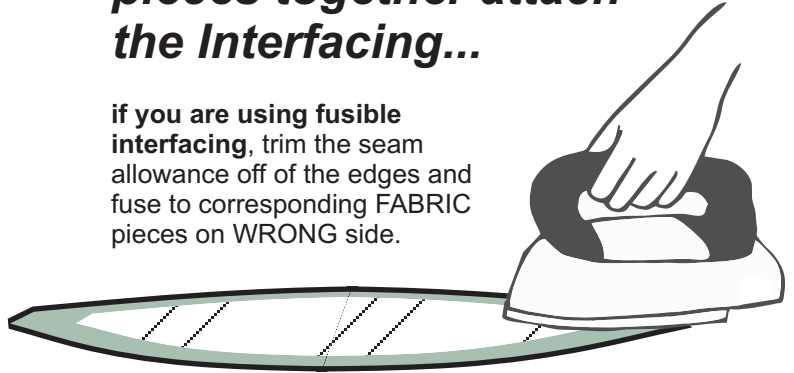
- \_\_\_ 2 Flap
- \_\_\_ 2 Crown
- \_\_\_ 1 Visor
- \_\_\_ 1 Top

### Heavyweight Stabilizer:

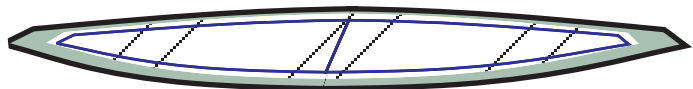
- \_\_\_ 1 Visor

## Before you sew your pieces together attach the Interfacing...

if you are using fusible interfacing, trim the seam allowance off of the edges and fuse to corresponding FABRIC pieces on WRONG side.

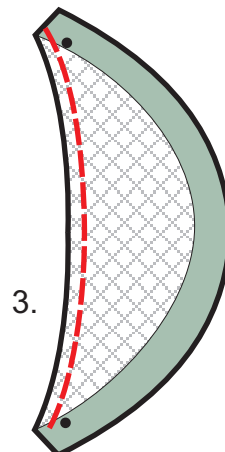
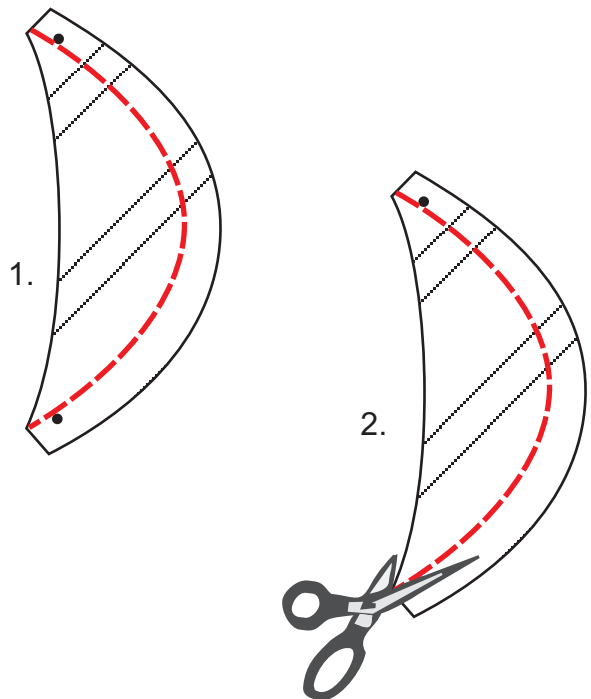


If you are using sew-in interfacing, sew interfacing to corresponding FABRIC pieces on WRONG side, and trim 1/4" of Interfacing edge.



**It is highly recommended that you press your seams flat between steps. This will ensure the most polished, completed look.**

1. Sew a line along Visor STABILIZER 3/4" from outer edge.
2. Cut along the seam line to remove seam allowance from STABILIZER.
3. Baste Heavyweight Stabilizer to wrong side of Visor along the inner edge, matching circles.
4. Pin and sew Visor pieces, right sides together, along outer edge, matching circles. Grade outer seam.



3.

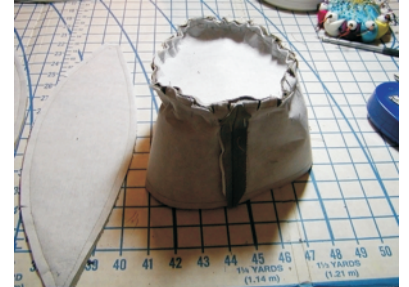
5. Flip Visor right side out and press. Beginning at outer edge, topstitch lines 1/4" apart. Continue to sew lines until you are about 1 1/4" from inner edge.

Note: It helps to hold the visor in a curve when topstitching (shown) to prevent puckering. You can also iron the visor on a tailor's ham to reinforce the final shape.



5.

6. Pin and sew Crown fabric pieces together at sides, matching notches.
7. Repeat step 6 for Crown Lining.
8. Notch upper edge of Crown with your scissors - but do not cut past the seam allowance.
9. Pin hat Top to Crown, matching circles on Top to seam lines on Crown at the front and back of the hat.



8 - 9.

10. Topstitch through seam allowance and fabric 1/8" from edge along the top of Crown. This will help to stabilize the hat and give a more polished look.



10.

11. Repeat Steps 8 - 10 for Hat Lining.

12. Pin and sew Flap pieces, WRONG sides together along notched edge.

13. Turn flap out, press, and top stitch 1/4" from top edge.

14. Baste flap opening closed.



13.

15. Pin and sew Flap to Crown in the front, matching Flap center to Crown seam line.

16. Repeat Step 15, but this time attach the 2nd Flap to the back of the hat.  
The back flap will overlap the front flap a little bit on the sides.

17. Sew along bottom edge of hat at the 5/8" seam allowance.



15 - 17.

18. Sew Visor to the front, matching center circles to crown seams.

Note: The visor will be very stiff - take care not to stick your fingers with the pins!

**Another option** is to pin only the CENTER of the visor down to the hat Crown, and stitch from the center out. This will create two seam lines - one from the center to the right and one from center to left. This will help prevent shifting and puckering of the Visor when attaching it to the Crown.



18.

19. Turn Flaps down and stitch along bottom edge of Crown 1/4". This seam will NOT be visible when the hat is completed.



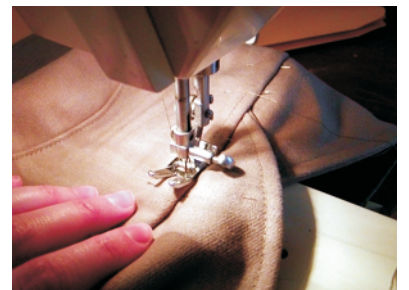
19.

20. Turn Flaps back up over Hat Crown.

21. Press the lining edge under 5/8".

22. Pin Lining into hat, matching Crown seam lines.

23. Handstitch the lining into the hat along bottom edge.



19.

24. Turn back Flap down. Tack the front Flap down with a small stitch to prevent bulk



24.

25. Attach the Greeblie to the front flap. Your hat is finished!

